



AUTOID[®] 9U

RFID Industrial Android handheld terminal

AUTOID[®]9U

Long distance • Multi-tag • Long battery life • Industrial standard

- High performance Impinj solution, high sensitivity design
- Specialized in long distance and multi-tag reading
- 10400mAh large battery capacities, 12 hours Battery life
- Reach functions with multiple collection functions.
- Industrial grade standard product design, sturdy and durable.
- Applicable in fields like: product tracing, warehouse management, fixed asset management, routing inspection and etc.



High performance platform

- Android 9.0
- Qualcomm 8 core
- 3GB RAM 16GB ROM
- 4" IPS screen
- 10400mAh high capacity battery
- IP65, 1.2m drop resistance

Multi-communication network

- 4G full network
- 2.4G/5.0G dual frequency WIFI
- Bluetooth 4.2



Professional reading/writing capability

- Support EPC C1 GEN2/ISO18000-6C
- Reading distance up to 15m
- Capable for multi-tag reading, Can read 500 tags in 15 seconds

Rich functions to fit your need

- 1D/2D/UHF/HF/GPS/Camera

Focus on UHF reading, great performance

Seuic

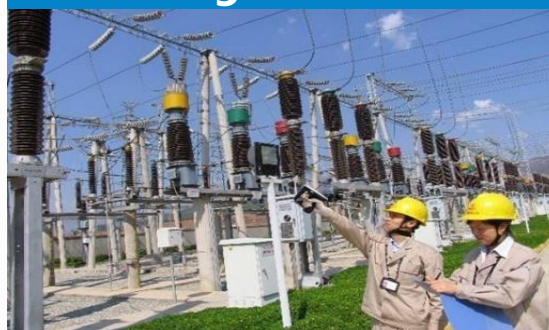
AUTOID®9U focus on UHF reading, with leading Impinj R2000 chip, self-developed module and antenna, comes exceptional stability and sensitivity.

Fast reading speed



- Up to 200 tags/second
- High sensitivity, leading performance within similar products

Long distance



- Up to 15m
- Adjustable reading range
- Support customize optimization for certain tag to read certain tag in longer distance

Multi-tag reading



- Can read up to 500 tags within 15 seconds.
- Dynamic collision avoidance algorithm to ensure no tag can be missed

▶ **Exceptional Ergonomics design lead to effective workflow**

Seuic



User-friendly grip design, Stable when operating

9200mAh high capacity battery



- Dual battery design
- Main battery 4000mAh+ hand grip 6400mAh)

Advanced reading algorithm



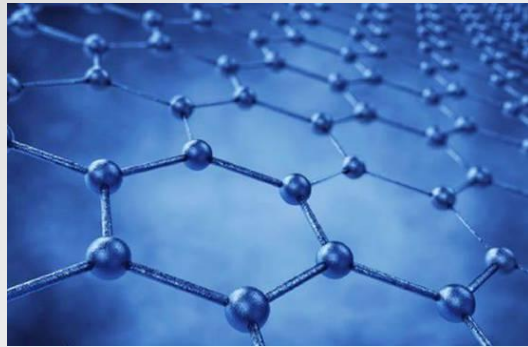
- Ensure batch reading labels
- Battery saving mechanism during continuous reading



Support full day usage



- Last up to 6~12 hours



Graphene material for
heat releasing



Intelligent high temperature
protection to avoid failure caused
by the high temperature
environment



High precision calibration is performed on each device during production

- rate of deviation < 0.5dbm
- Guarantee excellent performance and consistency of the product
- Guarantee the accuracy of the distance adjustment



- Support the specified label read and write



- Support signal intensity query apply to label and location and distance adjustment

Rich functions to fit all applications

Seuic



2D



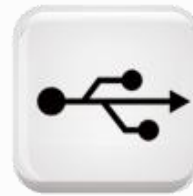
GPS



Camera



UHF

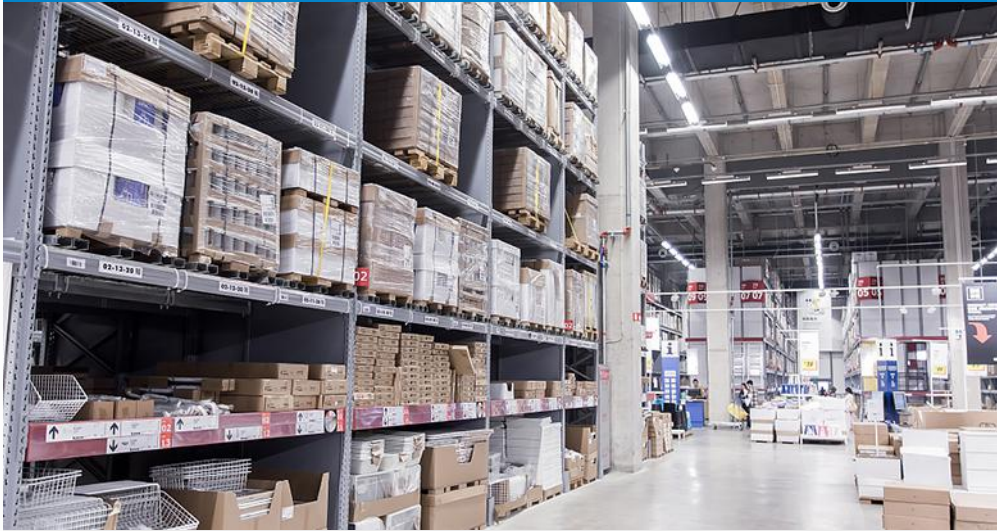


OTG

Wireless connection at anytime and anywhere

Seuic

Stable high-speed WIFI



- **Dual Frequency four modes:** support 802.11 a/b/g/n/ac and 2.4G/5G
- **Support seamless roaming**
- **Suitable for all sorts of warehouse management**

Support all 4G network mode



- Support all 4G network mode
- Make outdoor operation more efficient

Wear-resisting keys

- Wear-resisting design
- Extra 10 shortcut keys



Excellent experience

- Support glove/wet hand operation
- Support operation with extreme working environment
- IPS screen, perfect for out door use



With gloves



Wet hand



Low temp



Visibility

1.2m drop protection

- Internal injection molding with Magnesium aluminum



Intimate software design, make managers more comfortable

Seuic

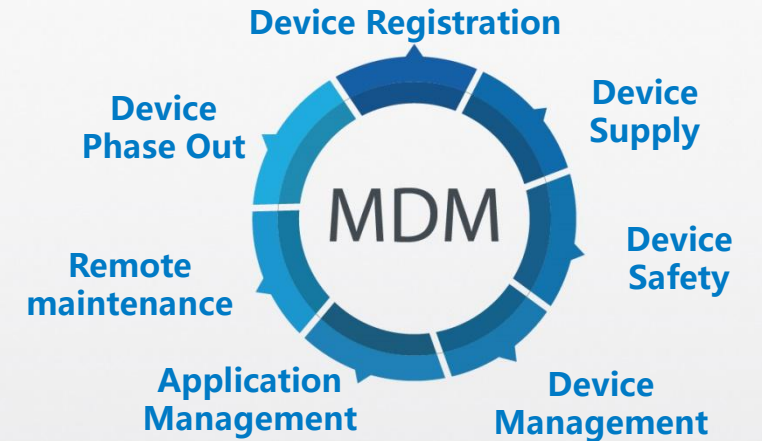
Implement batch fast configuration, fast upgrade function, support MDM
(mobile device management platform)



One-button system quick upgrade



Batch quick configuration



SEUIC MDM
(Full Lifecycle Management)

How to order

AUTOID®9U function introduction



Standard/Optional	Function	Code	Details
Standard	CPU	1.8Q8	8 core 1.8GHz
	OS	9.0	Android9.0
	RAM/ROM	3/16	RAM 3G ROM 16G
	UHF	U8/2	R2000module
	GPS	——	GPS、Beidou、GLONASS (3 in 1)
	WIFI	——	802.11a/b/g/n/ac
	Bluetooth	——	Bluetooth4.2
	WWAN	G	4G
	Antenna	A4	4dbi circularly polarized antenna
Standard options	Scan engine	X3(MR-U)	2D image scanning engine(middle range)
	CAMERA	C8	8 mega pixels, auto focus
		C13	13mega pixels (Only GMS Version)

Order example:

1、 Need X3(MR-U), and 13mega pixels Camera functions, should write : AUTOID9U-1.8Q8-9.0-3/16-X3(MR-U)U8/2GC13-A4



Standard 17 keys

The blue silk screen next to the number is F1~F10 (default standard configuration)



Letter key 17 keys

The blue silk screen next to the number is the letter

Accessories options

Power adapters



Model: FJ-SW0505000D*1

Note: Please note the European or British regulations when placing an order.

USB cable



Model: WT18013102*1

Single-slot Charing Dock



Model : DTO-104-B-01

4-slot Charging Dock



Model : SLO-104-B-01



Seuic