

HS220

Industrial wireless scanner

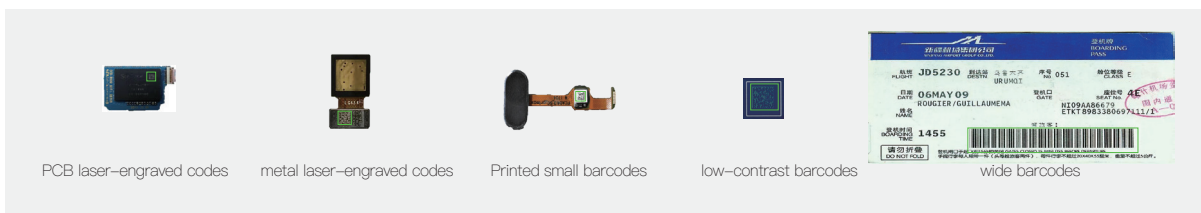
HS220, is a high-performance wireless Bluetooth scanner designed for the manufacturing industry, also totally suitable for other scenarios needs high performance. Compared with general-purpose scanners, HS220 provides better decoding performance and user experience for micro-sized high-density barcodes, laser-engraved barcodes or inkjet codes on the surface of printed circuit boards, 2-dimensional codes engraved on metal parts and various barcodes with poor printing quality.



Core Advantages

Powerful decoding

Quickly and accurately identify PCB laser-engraved codes, metal laser-engraved codes, printed small barcodes, low-contrast barcodes and wide barcodes.



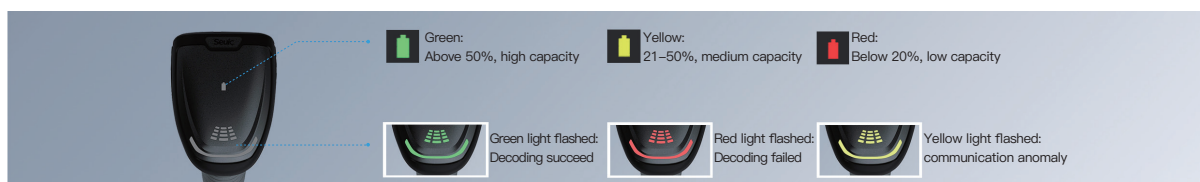
Intelligent Illumination, automatic adjustment

The red/white twin-color intelligently adjusts the lighting and automatically adapts to barcodes with different background colors.



Human-computer interaction, friendly hints

Multi-color reminder lamp group design, the equipment status is clear at a glance.



Application scenarios: Electronics and Manufacturing

Complete machine and parts manufacturing/Parts Tracking/Manufacturing production line barcode capture for pass station collection/Collection of Barcodes from Home Appliance Manufacturing/Auto parts assembly



Performance, Physical and environment parameters

Image Sensor	1280*800 COMS sensor with global shutter		
Camera Option	High density	Standard Range	
Ambient Light	Automatic adjustment, white or red		
sighting device	Crossing laser aiming with frame		
Scan Frequency	Maximum 60fps		
Code Support	Code128, GS1 128, Code39, Code93, codabar, Interleaved 2 of 5, EAN/UPC, QR, Micro QR, DataMatrix, PDF417, MicroPDF417.		
Skew Tolerance	Pitch angle $\pm 60^\circ$ and skew angle $\pm 55^\circ$		
Scan Accuracy	1D:3mil, 2D:5mil		
Standard Range for Typical Symbols		High Density	Standard Range
	3mil Code128	1cm ~ 10cm	/
	5mil Code128	1cm ~ 15cm	3cm ~ 28cm
	10mil Code128	1cm ~ 21cm	1cm ~ 50cm
	ENA 13	0cm ~ 15cm	1cm ~ 41cm
	5mil DM/QR	1cm ~ 7cm	/
	6.6mil DM/QR	1cm ~ 11cm	/
	10mil DM/QR	0cm ~ 15cm	3cm ~ 22cm
20mil DM/QR	0cm ~ 25cm	2cm ~ 45cm	
Bluetooth	Bluetooth 5.0 BLE, Class 1		
vibrating motor	yes		
Expansion Slot	RS232, USB Keyboard, USB COM		
Dimension	166.2*105.5*68.5mm		
Weight	213g \pm 3g		
Working temperture	0°C to 50°C		
Storage Temperature	-20°C to 70°C		
Humidity	5% to 95% RH non-condensing		
Sealing Grade	IP54		
Lighting Grade	0 to 100,000Lux		
Drop Specification	50 rounds of 5.8 ft./1.8m drops across the operating temperature range		
Impact Specification	2000 rounds of 0.5m tumble		
Shell Material	Highly resistant industrial palstic		
Power	Rated power:3150mAh; Typical capacity:3500mah; Detachable battery;		
ESD	\pm 15kV Air discharge, \pm 8kV direct discharge		
Certificates	CE, FCC, RoHS, UN38.3		



Follow Our
Official Wechat

E-mail: AUTOID@seuic.com
Address: No.15 Xinghuo Road, JiangBei New Area, Jiangsu, China

www.seuic.com
400-677-0876